

# OMEGA

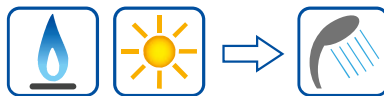
## Domestic hot water tank



100 150 200 300 400 500 600 750 800 1000 1250 1500 2000 2500 3000 4000 5000



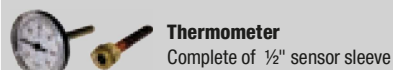
Tanks for domestic hot water storage(DHW).



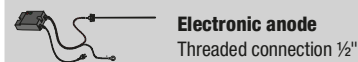
### Main features

<b>Material</b>		Carbon steel
<b>External treatment</b>	750 - 2000	Rustproof paint
<b>Maximum working pressure</b>	Tank	6 bar
<b>Maximum working temperature</b>	Tank	95 °C
<b>Maximum working pressure</b>	Exchanger	10 bar
<b>Maximum working temperature</b>	Exchanger	110 °C
<b>Internal treatment</b>	Tank	Glass-Enamelled DIN 4753
<b>Guarantee</b>	Tank	5 years

### Accessories

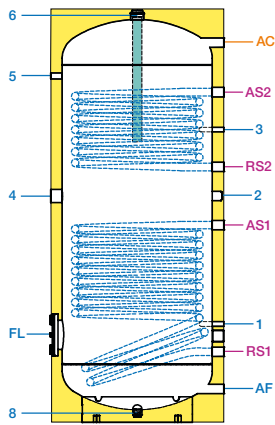


### Accessories

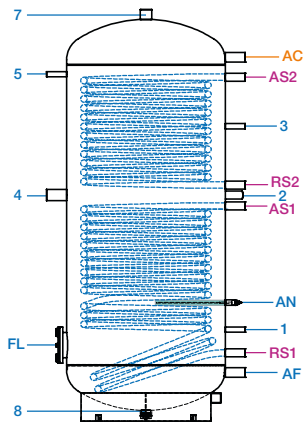


Model	Insulation	Cathodic protection	Efficiency class UE 812/2013	Dispersion (W)	Lower exchanger (m²)	Upper exchanger (m²)	Weight (kg)
OMEGA 200	PU 50mm + PVC	Magnesium anode	B	63	1.0	0.6	90
OMEGA 300	PU 50mm + PVC	Magnesium anode	B	70	1.4	1.0	124
OMEGA 400	PU 50mm + PVC	Magnesium anode	C	79	1.5	1.0	146
OMEGA 500	PU 50mm + PVC	Magnesium anode	C	94	1.8	1.2	160
OMEGA 750	Polyester 100mm + PVC	Electronic anode (single)	C	127	2.4	1.8	247
OMEGA 1000	Polyester 100mm + PVC	Electronic anode (single)	C	142	3.0	2.4	272
OMEGA 1500	Polyester 100mm + PVC	Electronic anode (double)	C	171	3.6	3.0	390
OMEGA 2000	Polyester 100mm + PVC	Electronic anode (double)	D	204	4.2	3.0	455

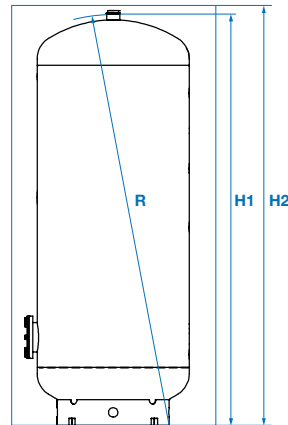
### OMEGA 150-500



### OMEGA 750-1000

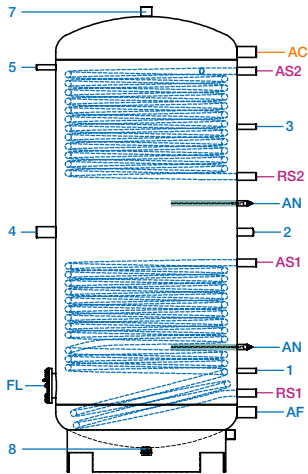


### Dimension

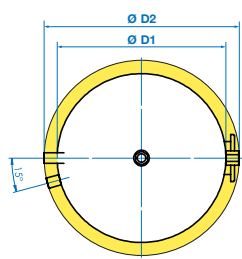


Legend			
1	Sensor	200-500	Sleeve ø20
3		750-2000	½"
2	Pumped DHW return		1"
4	Heating element		1" ½
5	Thermometer		½"
6	Magnesium anode		1" ½
7	Free-Air hole		1" ½
8	Drainage	200-500	¾"
	Drainage	750-2000	1" ½
FL	Flange for inspection		ø180
AN	Electronic anode		½"
RS1	Solar retur		1"
RS2	Solar flow		1"
AS1	Solar flow		1"
AS2			
AF	Cold water inlet	200-500	1"
		750-1000	1" ¼
		1500-2000	1" ½
AC	Hot water outlet	200-500	1"
		750-1000	1" ¼
		1500-2000	1" ½

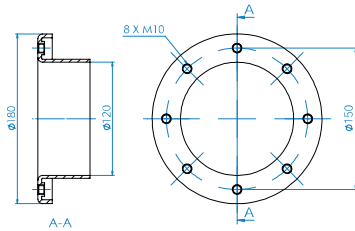
### OMEGA 1500-2000



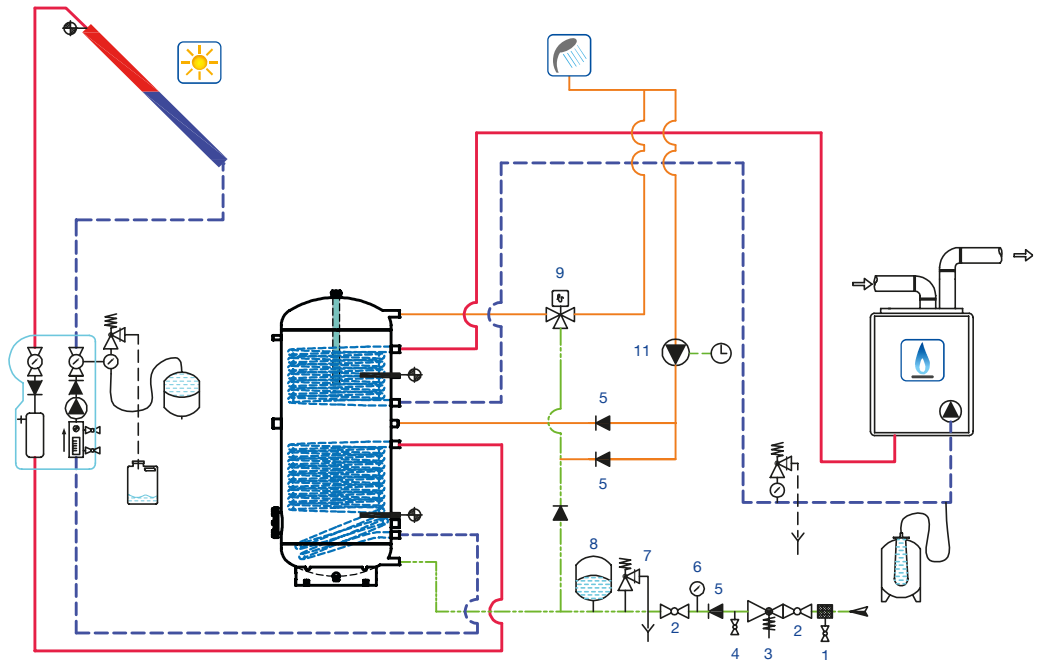
### Dimension



ø D1	Diameter without insulation
ø D2	Diameter with insulation
R	Topple height
H1	Height without insulation
H2	Height with insulation



Flange (ø180) size



Model	1	2	3	4	5	FL	AF	AC	RS1	AS1	RS2	AS2	ø D1	ø D2	R	H1	H2
200	378	763	931	756	1076	323	132	1177	253	703	810	1050	500	600	1460	1307	1328
300	392	848	1062	848	1268	358	138	1398	278	798	898	1228	550	650	1670	1511	1532
400	423	833	1023	833	1225	376	143	1368	303	763	903	1183	650	750	1680	1491	1502
500	423	973	1259	973	1490	376	143	1633	303	848	1098	1420	650	750	1930	1756	1777
750	452	1106	1470	1106	1730	374	237	1815	336	941	1266	1716	750	950	2085	2055	2090
1000	458	1132	1476	1132	1736	380	243	1820	342	1077	1182	1722	790	990	2090	2060	2090
1500	526	1250	1800	1250	2110	448	310	2190	410	1090	1540	2090	950	1150	2465	2425	2475
2000	541	1335	1815	1335	2125	463	325	2205	425	1205	1555	2105	1100	1300	2530	2475	2524